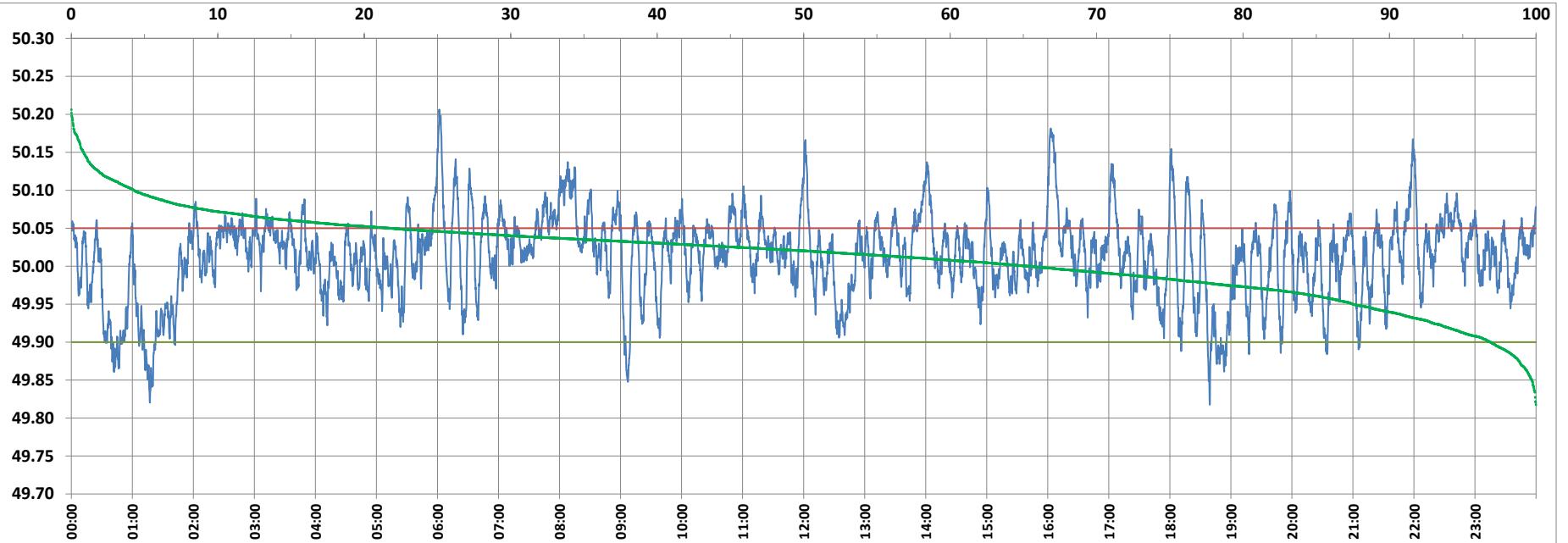


POWER SYSTEM OPERATION CORPORATION LIMITED

NATIONAL LOAD DESPATCH CENTRE, NEW DELHI



Frequency profile for 27-Feb-2022 (Sunday)



<49.7	<49.90	<49.97	49.7-49.8	49.8-49.9	49.9-50.0	50.0-50.1	50.1-50.2	49.90-50.05	49.7-50.2	49.97-50.03	50.05-50.1	>50	>50.03	>50.05	>50.2	<49.95	49.95-50.05	49.90-49.95
0.00	3.13	18.48	0.00	3.13	31.59	61.01	4.26	75.15	99.98	41.10	17.44	65.29	40.42	21.72	0.02	12.50	65.78	9.38

Average Frequency : 50.013

Frequency Variation Index : 0.0304

Standard Deviation : 0.0537

Mileage: 45.6

FDI: 24.8

Instantaneous Frequency

Max	50.206	6:01:40
Min	49.817	18:39:10

15 minute Average Frequency

Max	50.108	8:15:00
Min	49.890	1:30:00

No. of excursions

above 50.03 Hz	212
below 49.97 Hz	106
above 50.00 Hz	158
below 50.00 Hz	157

Average time freq per excursion remains

below 49.97	0:02:31
above 50.03	0:02:45

No. of hours freq outside 49.9-50.05 Hz

5:57:50

Source : AGRA 10 Sec. (8640 samples)