

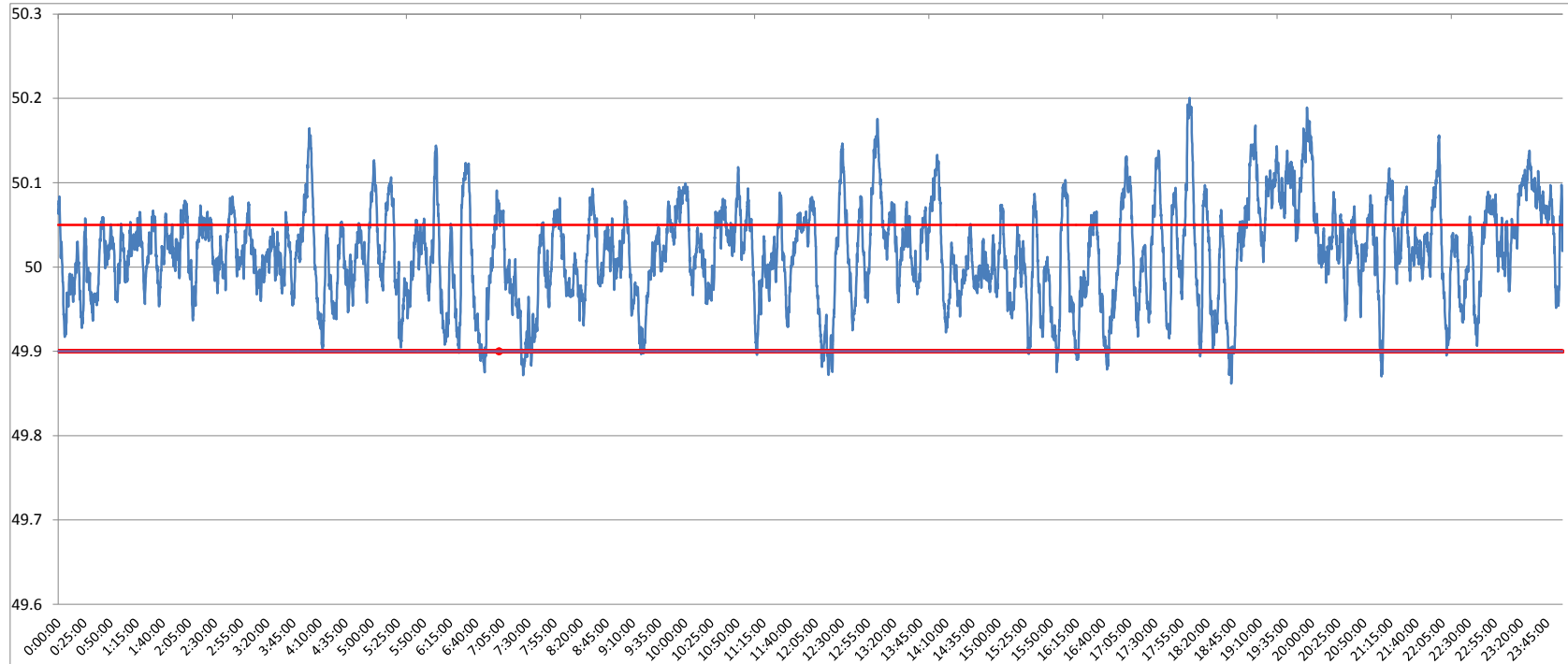


POWER SYSTEM OPERATION CORPORATION LIMITED
NATIONAL LOAD DESPATCH CENTRE NEW DELHI

BOISAR:Frequency

National Grid Frequency Profile for

11-Feb-17



<49.2	<49.7	<49.90	<49.97	49.7-49.8	49.8-49.9	49.9-50.0	50.0-50.1	50.1-50.2	49.90-50.05	49.7-50.2	49.97-50.03	50.05-50.1	>50	>50.03	>50.05	>50.2
0	0.00	2.15	20.44	0.00	2.15	35.79	55.56	6.49	70.34	99.99	38.54	21.06	62.03	41.02	27.51	0.01

Average Frequency		50.02	Frequency Variation Index :		0.035	Standard Deviation :		0.057
Instantaneous Frequency			15 minute average Frequency			No. of excursion above 50.03 Hz		175
Max	50.2	18:02:50	Max	50.124	20:00:00	No. of excursion below 49.97 Hz		113
Min	49.86	18:42:50	Min	49.933	7:30:00	No. of excursion above 50.00 Hz		165
						No. of excursion below 50.00 Hz		166
Average time freq remains below 49.97 per excursion		0:02:36	Average time frequency remains above 50.03 per excursion		0:03:23			