



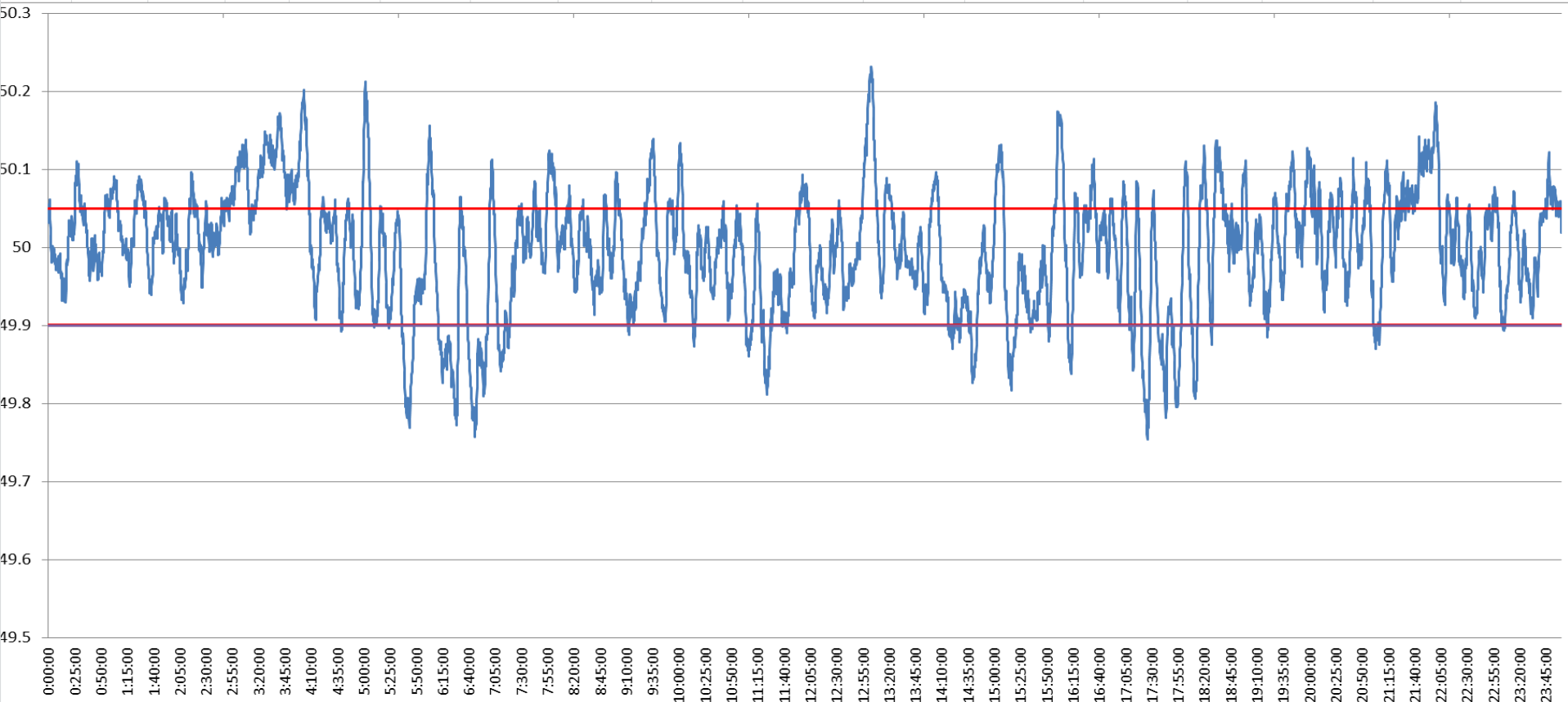
POWER SYSTEM OPERATION CORPORATION LIMITED

NATIONAL LOAD DESPATCH CENTRE NEW DELHI

400KV KALWA:Frequency

National Grid Frequency Profile for

19-Nov-15



<49.2	<49.7	<49.90	<49.97	49.7-49.8	49.8-49.9	49.9-50.0	50.0-50.1	50.1-50.2	49.90-50.05	49.7-50.2	49.97-50.03	50.05-50.1	>50	>50.03	>50.05	>50.2
0	0.00	10.60	33.68	1.09	9.51	37.42	43.73	7.94	63.76	99.69	29.68	18.08	51.01	36.64	25.64	0.31

Average Frequency		50.00	Frequency Variation Index :		0.060	Standard Deviation :		0.077
Instantaneous Frequency			15 minute average Frequency			No. of excursion above 50.03 Hz		119
Max	50.23	13:03:10	Max	50.130	3:45:00	No. of excursion below 49.97 Hz		90
Min	49.75	17:25:50	Min	49.840	6:30:00	No. of excursion above 50.00 Hz		85
Average time freq remains below 49.97 per excursion		0:05:23	Average time frequency remains above 50.03 per excursion		0:04:26	No. of excursion below 50.00 Hz		95