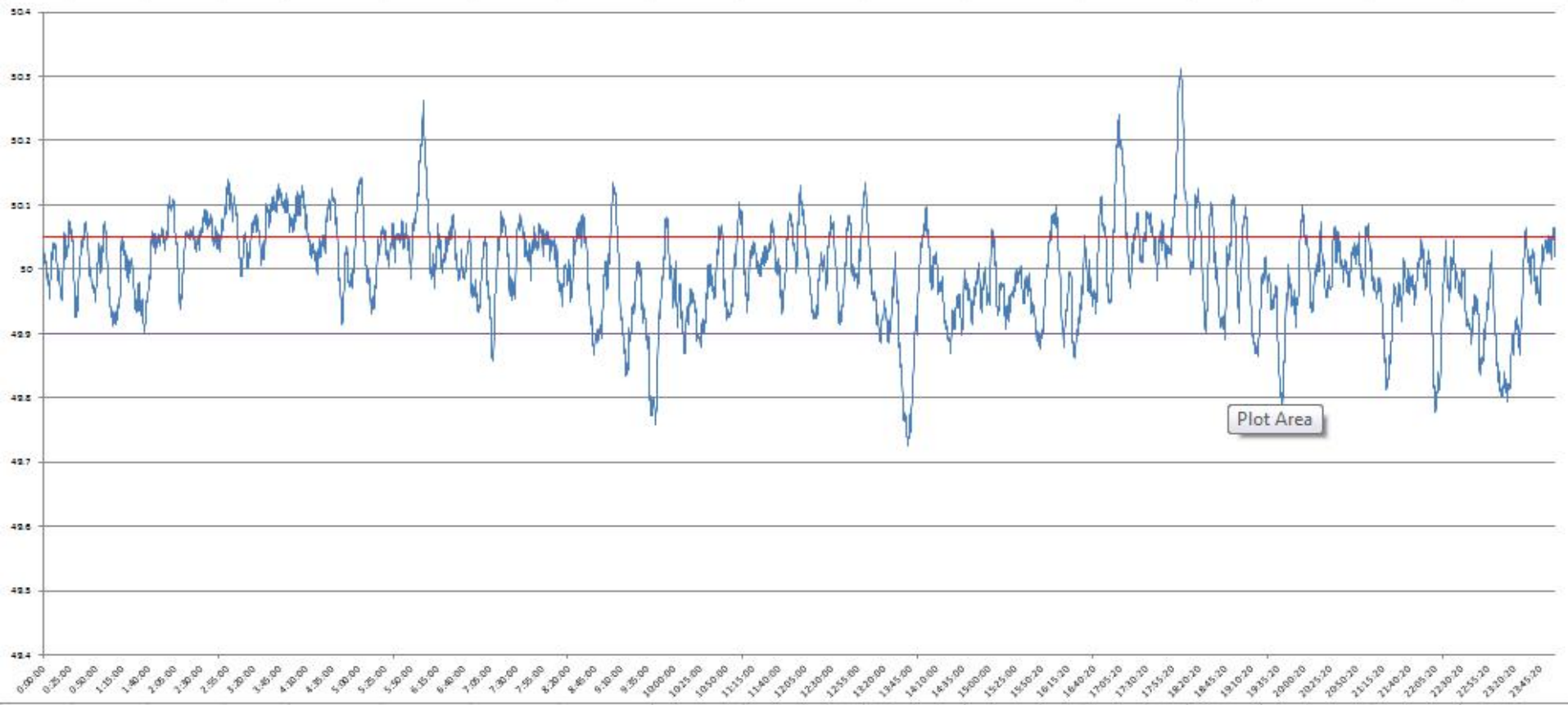




POWER SYSTEM OPERATION CORPORATION LIMITED
NATIONAL LOAD DESPATCH CENTRE NEW DELHI

NTPC-VINDHYACHAL:Frequency

National Grid Frequency Profile for 18-May-15



<49.2	<49.7	<49.90	<49.97	49.7-49.8	49.8-49.9	49.9-50.0	50.0-50.1	50.1-50.2	49.90-50.05	49.7-50.2	49.97-50.03	50.05-50.1	>50	>50.03	>50.05	>50.2
0	0.00	8.81	32.26	1.26	7.55	39.14	46.10	5.22	67.11	99.27	31.81	18.24	51.96	35.94	24.09	0.73

Average Frequency		50.00	Frequency Variation Index :		0.056	Standard Deviation :		0.075
Instantaneous Frequency			15 minute average Frequency			No. of excursion above 50.03 Hz		124
MAX	50.31	18:03:40	Max	50.148	18:15:00	No. of excursion below 49.97 Hz		119
Min	49.73	13:44:00	Min	49.849	9:45:00	No. of excursion above 50.00 Hz		125
Average time freq remains below 49.97 per excursion		0:03:54	Average time frequency remains above 50.03 per excursion		0:04:10	No. of excursion below 50.00 Hz		121