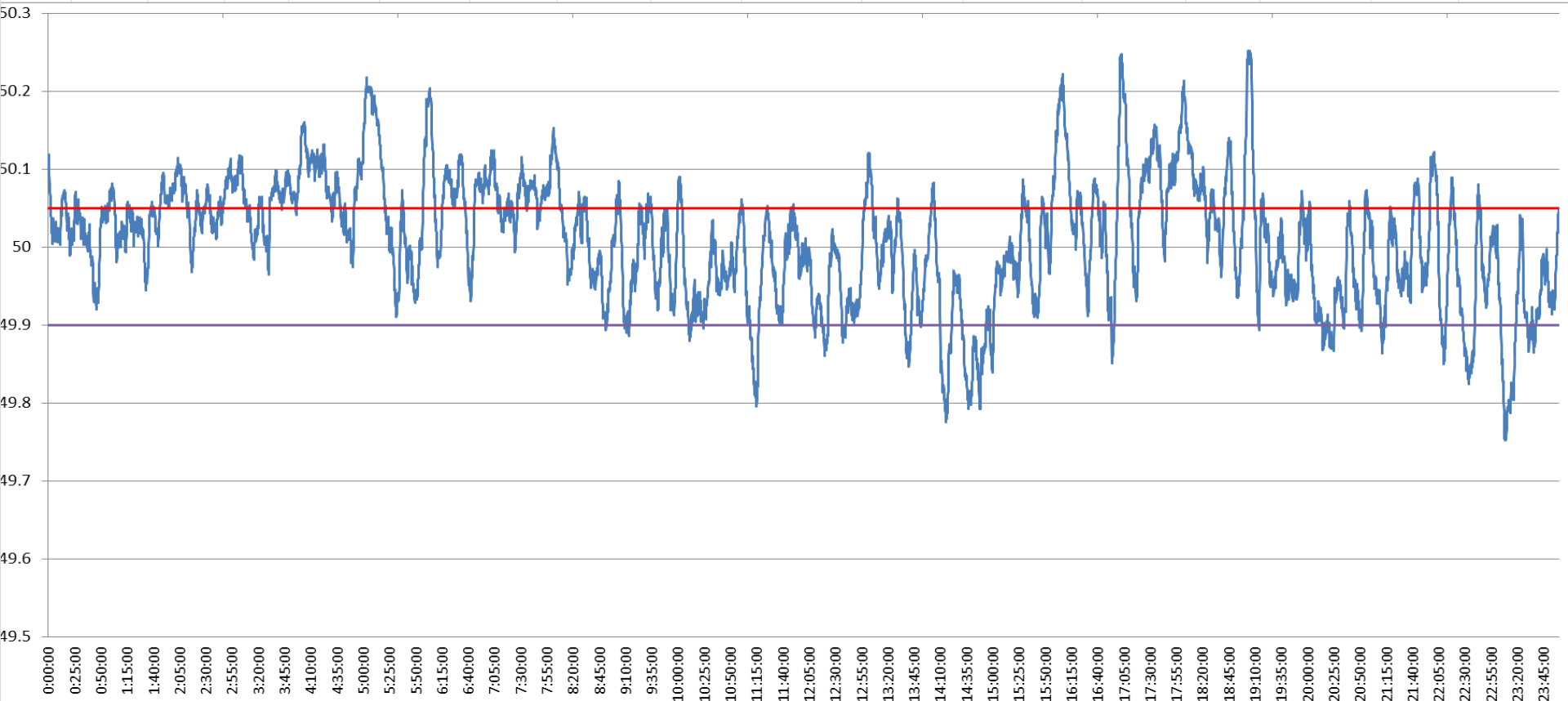




POWER SYSTEM OPERATION CORPORATION LIMITED
NATIONAL LOAD DESPATCH CENTRE NEW DELHI

NTPC-VINDHYACHAL:Frequency

National Grid Frequency Profile for 11-Jun-15



0:00:00	0:25:00	0:50:00	1:15:00	1:40:00	2:05:00	2:30:00	2:55:00	3:20:00	3:45:00	4:10:00	4:35:00	5:00:00	5:25:00	5:50:00	6:15:00	6:40:00	7:05:00	7:30:00	7:55:00	8:20:00	8:45:00	9:10:00	9:35:00	10:00:00	10:25:00	10:50:00	11:15:00	11:40:00	12:05:00	12:30:00	12:55:00	13:20:00	13:45:00	14:10:00	14:35:00	15:00:00	15:25:00	15:50:00	16:15:00	16:40:00	17:05:00	17:30:00	17:55:00	18:20:00	18:45:00	19:10:00	19:35:00	20:00:00	20:25:00	20:50:00	21:15:00	21:40:00	22:05:00	22:30:00	22:55:00	23:20:00	23:45:00
<49.2	<49.7	<49.90	<49.97	49.7-49.8	49.8-49.9	49.9-50.0	50.0-50.1	50.1-50.2	49.90-50.05	49.7-50.2	49.97-50.03	50.05-50.1	>50	>50.03	>50.05	>50.2																																									
0	0.00	8.46	31.79	0.73	7.73	34.53	46.37	9.58	59.80	98.94	25.83	21.17	57.00	42.37	31.74	1.06																																									

Average Frequency		50.01	Frequency Variation Index :		0.065	Standard Deviation :		0.080
Instantaneous Frequency			15 minute average Frequency			No. of excursion above 50.03 Hz		117
Max	50.25	19:03:50	Max	50.182	5:15:00	No. of excursion below 49.97 Hz		90
Min	49.75	23:08:30	Min	49.848	14:45:00	No. of excursion above 50.00 Hz		93
Average time freq remains below 49.97 per excursion		0:05:05	Average time frequency remains above 50.03 per excursion		0:05:13	No. of excursion below 50.00 Hz		92