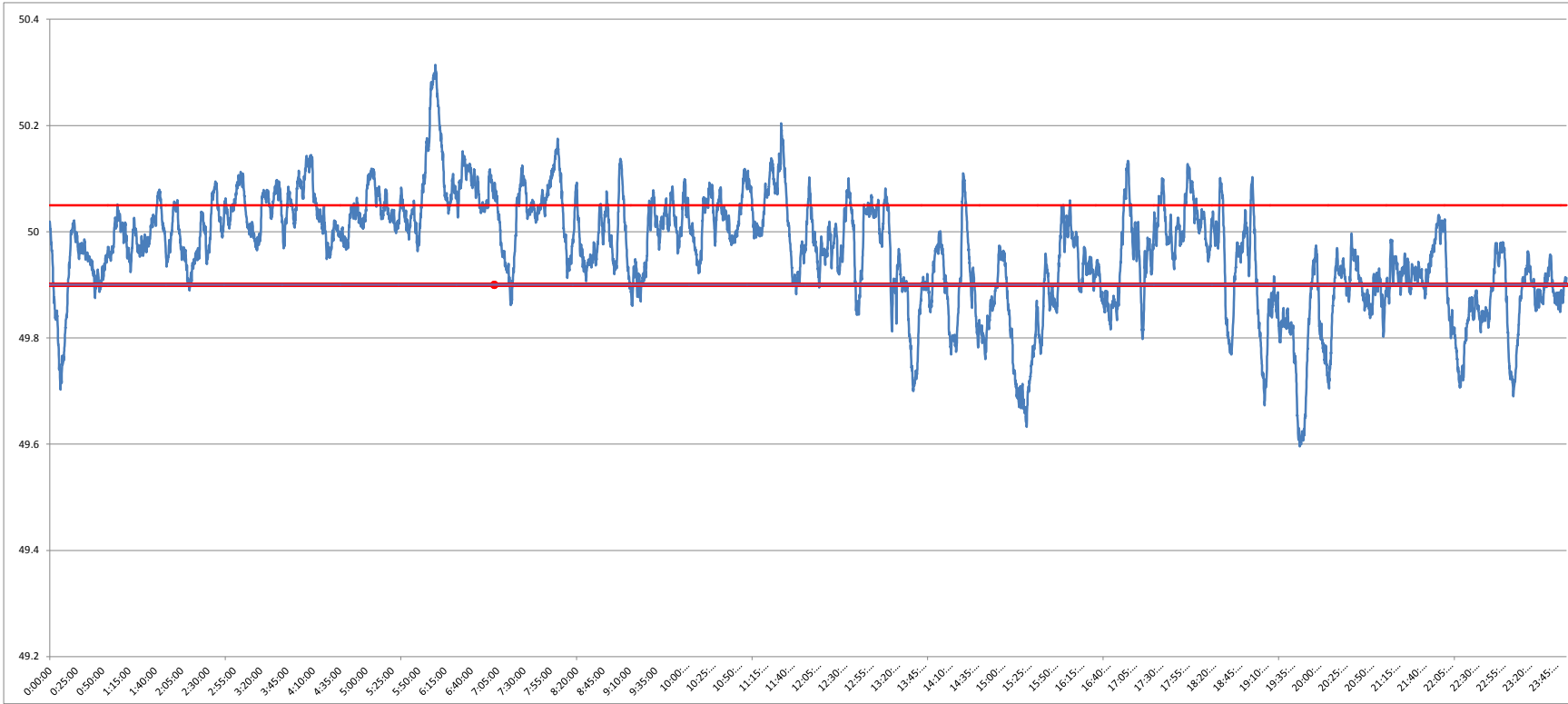




**POWER SYSTEM OPERATION CORPORATION LIMITED**  
NATIONAL LOAD DESPATCH CENTRE NEW DELHI

NTPC-VINDHYACHAL:Frequency

National Grid Frequency Profile for 29-05-14



<49.2	<49.7	49.7-49.8	49.8-49.9	49.9-50.0	50.0-50.1	50.1-50.2	>50.2	<49.90	49.90-50.05	>50.05	50.05-50.1	49.7-50.2	49.97-50.03
0	1.44	5.69	17.32	35.17	34.65	5.06	0.67	24.46	55.94	19.61	13.95	97.89	23.73

<b>Average Frequency</b>		<b>49.96</b>	<b>Frequency Variation Index :</b>		<b>0.121</b>	<b>Standard Deviation :</b>		<b>0.104</b>
--------------------------	--	--------------	------------------------------------	--	--------------	-----------------------------	--	--------------

Instantaneous Frequency			15 minute average Frequency		
<b>MAX</b>	<b>50.315</b>	<b>6:06:00</b>	<b>Max</b>	<b>50.224</b>	<b>6:15:00</b>
<b>Min</b>	<b>49.60</b>	<b>19:46:40</b>	<b>Min</b>	<b>49.690</b>	<b>15:30:00</b>