

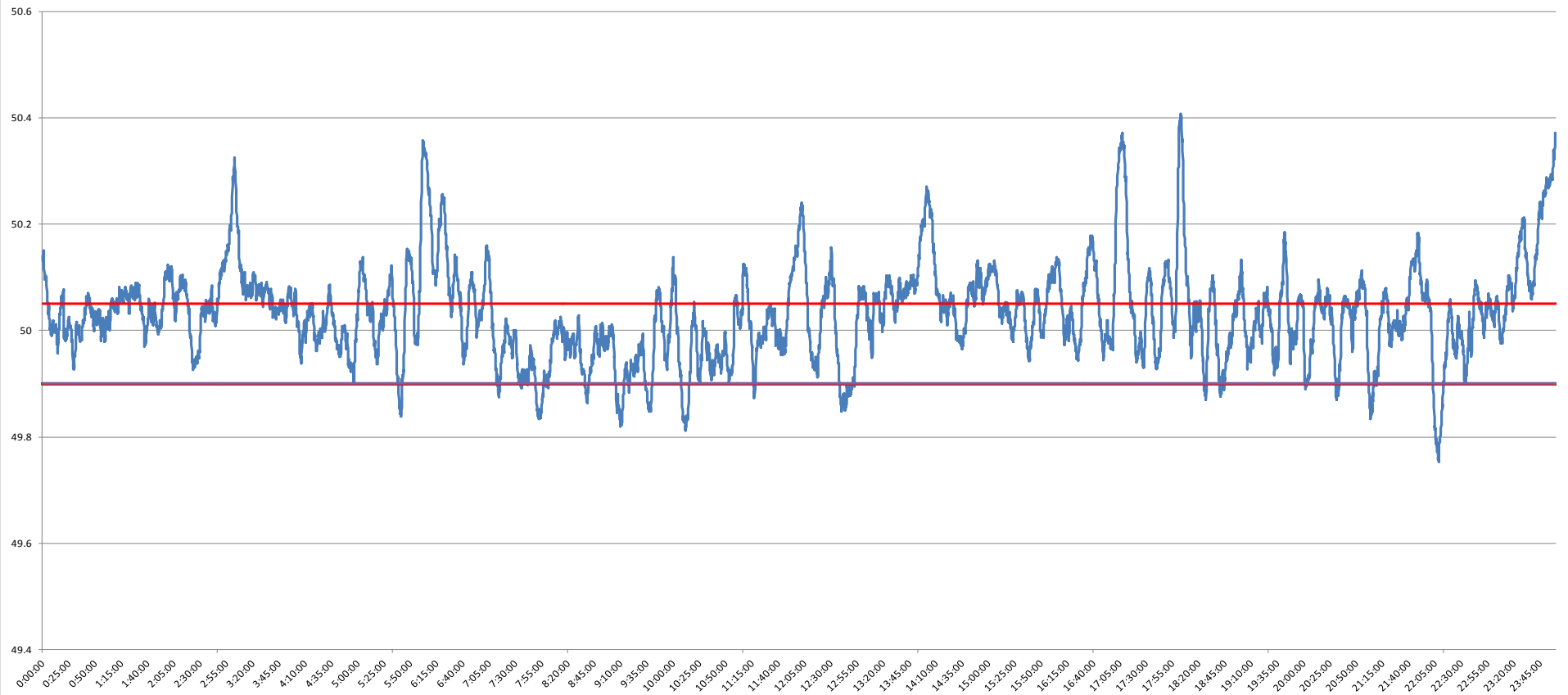


POWER SYSTEM OPERATION CORPORATION LIMITED
NATIONAL LOAD DESPATCH CENTRE NEW DELHI

400KV KALWA:Frequency

National Grid Frequency Profile for

11-Jan-15



<49.2	<49.7	<49.90	<49.97	49.7-49.8	49.8-49.9	49.9-50.0	50.0-50.1	50.1-50.2	49.90-50.05	49.7-50.2	49.97-50.03	50.05-50.1	>50	>50.03	>50.05	>50.2
0	0.00	5.65	22.16	0.30	5.35	29.83	48.51	11.17	55.79	95.15	28.36	23.44	63.62	49.48	38.56	4.85

Average Frequency		50.03	Frequency Variation Index :		0.091	Standard Deviation :		0.090
Instantaneous Frequency			15 minute average Frequency			No. of excursion above 50.03 Hz		109
MAX	50.41	18:03:20	Max	50.278	0:00:00	No. of excursion below 49.97 Hz		81
Min	49.75	22:08:30	Min	49.868	22:15:00	No. of excursion above 50.00 Hz		90
Average time freq remains below 49.97 per excursion		0:03:56	Average time frequency remains above 50.03 per excursion		0:06:32	No. of excursion below 50.00 Hz		86