

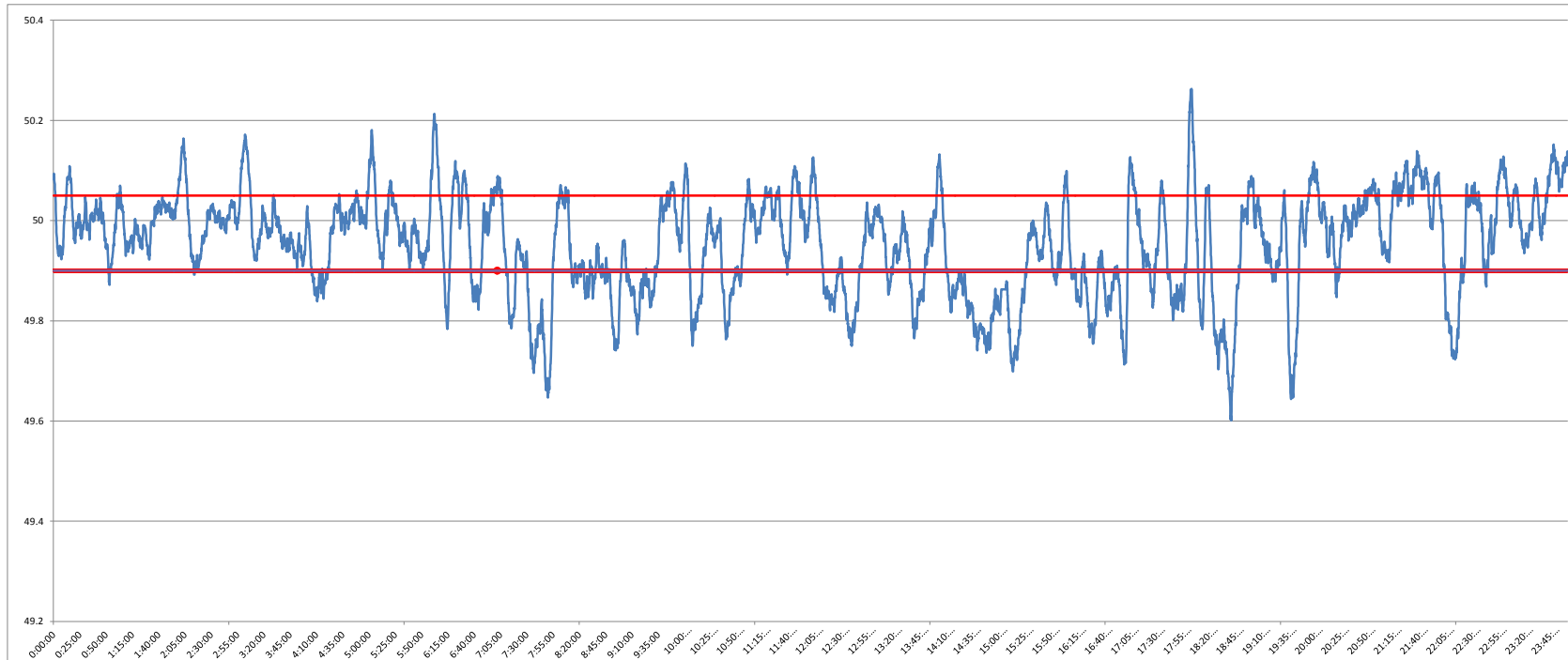


**POWER SYSTEM OPERATION CORPORATION LIMITED**  
NATIONAL LOAD DESPATCH CENTRE NEW DELHI

400KV KALWA:Frequency

National Grid Frequency Profile for

08-Jan-15



<49.2	<49.7	<49.90	<49.97	49.7-49.8	49.8-49.9	49.9-50.0	50.0-50.1	50.1-50.2	49.90-50.05	49.7-50.2	49.97-50.03	50.05-50.1	>50	>50.03	>50.05	>50.2
0	1.02	29.14	50.95	7.93	20.20	34.07	32.09	4.41	54.78	98.70	26.46	11.92	35.98	22.59	16.08	0.28

<b>Average Frequency</b>	<b>49.95</b>	<b>Frequency Variation Index :</b>	<b>0.125</b>	<b>Standard Deviation :</b>	<b>0.101</b>
<b>Instantaneous Frequency</b>		<b>15 minute average Frequency</b>		<b>No. of excursion above 50.03 Hz</b>	
<b>MAX</b>	<b>50.26</b>	<b>18:02:00</b>	<b>Max</b>	<b>50.106</b>	<b>0:00:00</b>
<b>Min</b>	<b>49.60</b>	<b>18:39:50</b>	<b>Min</b>	<b>49.726</b>	<b>18:45:00</b>
<b>Average time freq remains below 49.97 per excursion</b>		<b>0:10:29</b>	<b>Average time frequency remains above 50.03 per excursion</b>		<b>0:03:47</b>
			<b>No. of excursion below 49.97 Hz</b>		<b>70</b>
			<b>No. of excursion above 50.00 Hz</b>		<b>75</b>
			<b>No. of excursion below 50.00 Hz</b>		<b>73</b>