

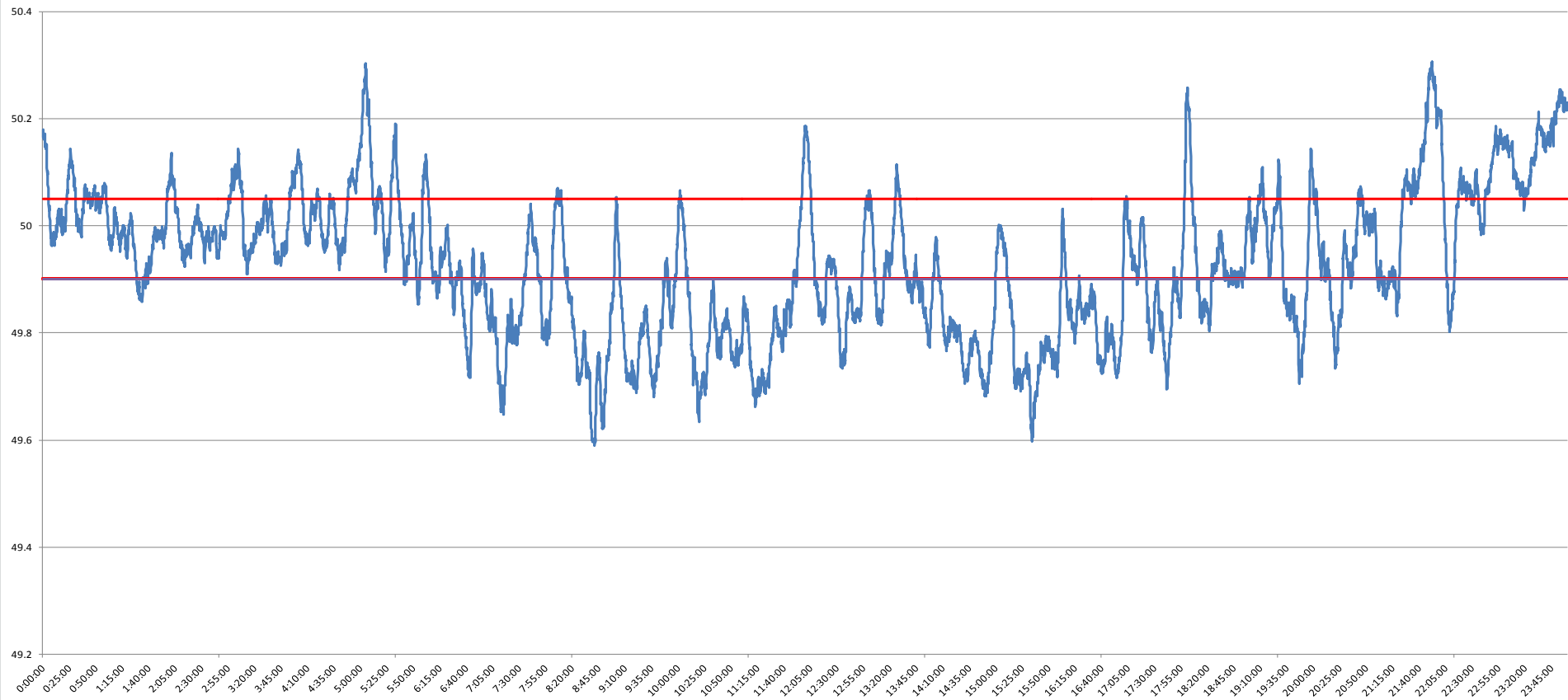


POWER SYSTEM OPERATION CORPORATION LIMITED
NATIONAL LOAD DESPATCH CENTRE NEW DELHI

MEERUT:Frequency

National Grid Frequency Profile for

26-Dec-14



<49.2	<49.7	<49.90	<49.97	49.7-49.8	49.8-49.9	49.9-50.0	50.0-50.1	50.1-50.2	49.90-50.05	49.7-50.2	49.97-50.03	50.05-50.1	>50	>50.03	>50.05	>50.2
0	2.94	42.59	60.39	16.27	23.38	26.63	21.16	7.19	38.23	94.63	15.78	9.79	29.99	23.83	19.18	2.43

Average Frequency		49.93	Frequency Variation Index :		0.234	Standard Deviation :		0.135
Instantaneous Frequency			15 minute average Frequency			No. of excursion above 50.03 Hz		63
MAX	50.31	21:52:00	Max	50.237	22:00:00	No. of excursion below 49.97 Hz		44
Min	49.59	8:41:00	Min	49.697	8:45:00	No. of excursion above 50.00 Hz		46
Average time freq remains below 49.97 per excursion		0:19:46	Average time frequency remains above 50.03 per excursion		0:05:27	No. of excursion below 50.00 Hz		38