

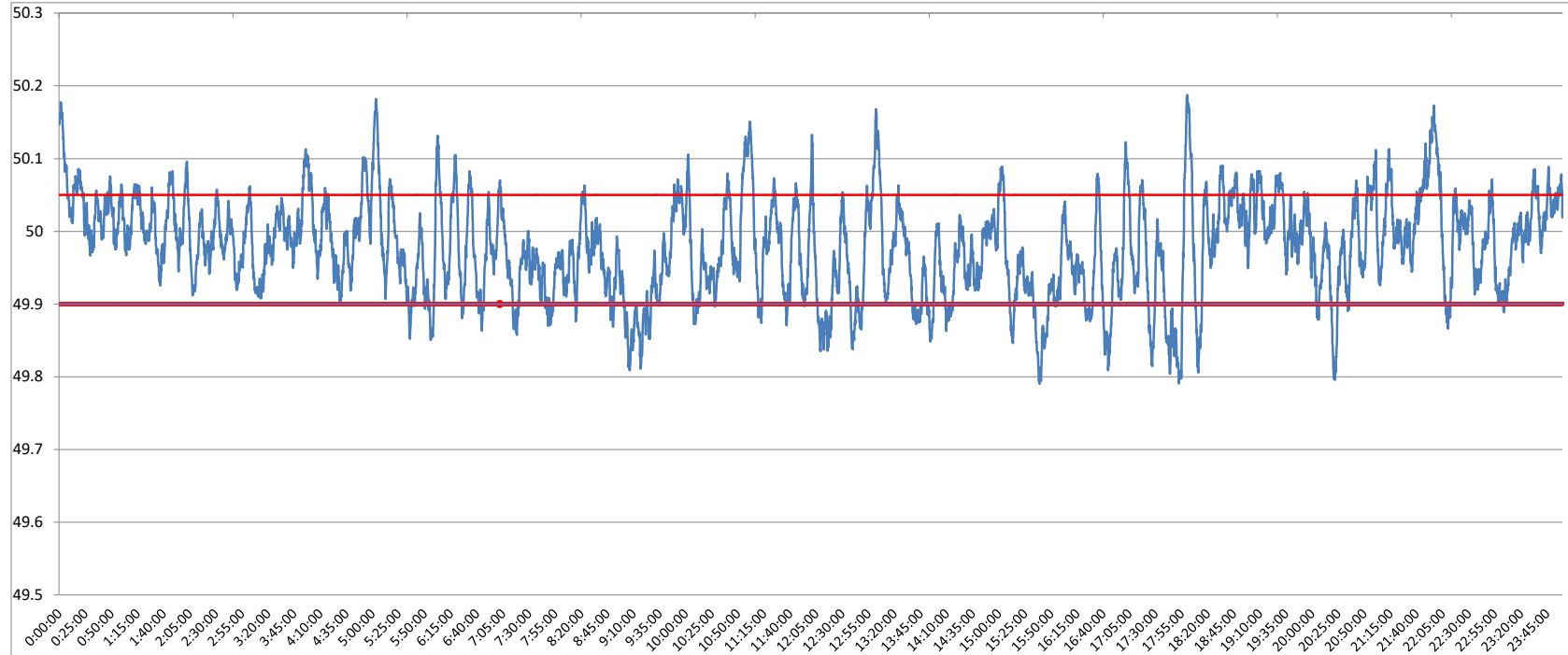


POWER SYSTEM OPERATION CORPORATION LIMITED
NATIONAL LOAD DESPATCH CENTRE NEW DELHI

NTPC-VINDHYACHAL:Frequency

National Grid Frequency Profile for

28-Nov-16



<49.2	<49.7	<49.90	<49.97	49.7-49.8	49.8-49.9	49.9-50.0	50.0-50.1	50.1-50.2	49.90-50.05	49.7-50.2	49.97-50.03	50.05-50.1	>50	>50.03	>50.05	>50.2
0	0.00	13.24	44.69	0.20	13.04	49.35	34.24	3.17	71.71	100.00	32.40	11.90	37.37	22.92	15.05	0.00

Average Frequency		49.98	Frequency Variation Index :		0.051	Standard Deviation :		0.068	
Instantaneous Frequency			15 minute average Frequency			No. of excursion above 50.03 Hz		103	
Max	50.19	18:00:20	Max	50.107	22:00:00	No. of excursion below 49.97 Hz		133	
Min	49.79	15:39:00	Min	49.861	15:45:00	No. of excursion above 50.00 Hz		158	
Average time freq remains below 49.97 per excursion			0:04:50	Average time frequency remains above 50.03 per excursion		0:03:12	No. of excursion below 50.00 Hz		157