

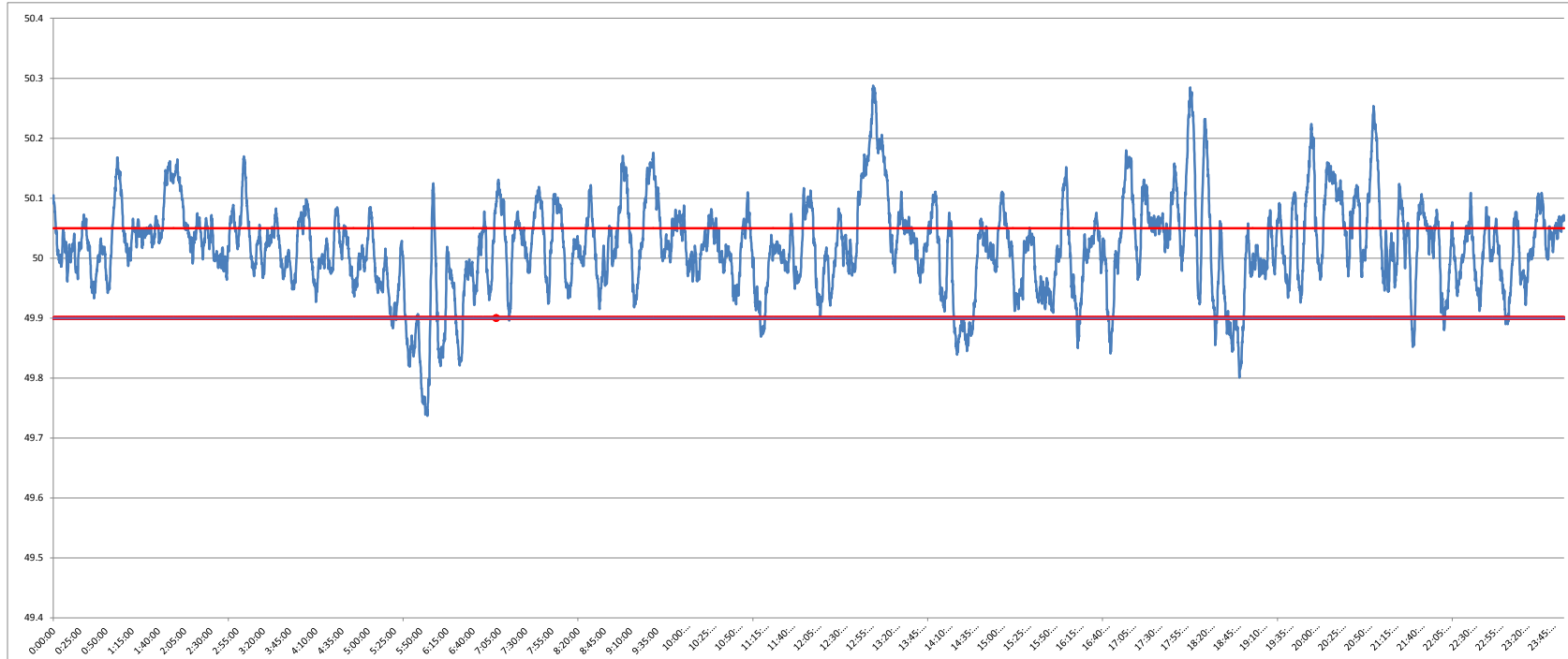


POWER SYSTEM OPERATION CORPORATION LIMITED
NATIONAL LOAD DESPATCH CENTRE NEW DELHI

400KV KALWA:Frequency

National Grid Frequency Profile for

26-Feb-15



<49.2	<49.7	<49.90	<49.97	49.7-49.8	49.8-49.9	49.9-50.0	50.0-50.1	50.1-50.2	49.90-50.05	49.7-50.2	49.97-50.03	50.05-50.1	>50	>50.03	>50.05	>50.2
0	0.00	6.57	22.50	0.56	6.02	30.56	50.66	10.75	62.75	98.54	34.62	19.35	61.70	42.88	30.67	1.46

Average Frequency		50.02	Frequency Variation Index :		0.061	Standard Deviation :		0.076	
Instantaneous Frequency			15 minute average Frequency			No. of excursion above 50.03 Hz		109	
MAX	50.29	13:01:20	Max	50.202	13:15:00	No. of excursion below 49.97 Hz		71	
Min	49.74	5:56:30	Min	49.816	6:00:00	No. of excursion above 50.00 Hz		103	
Average time freq remains below 49.97 per excursion			0:04:34	Average time frequency remains above 50.03 per excursion		0:05:40	No. of excursion below 50.00 Hz		101