

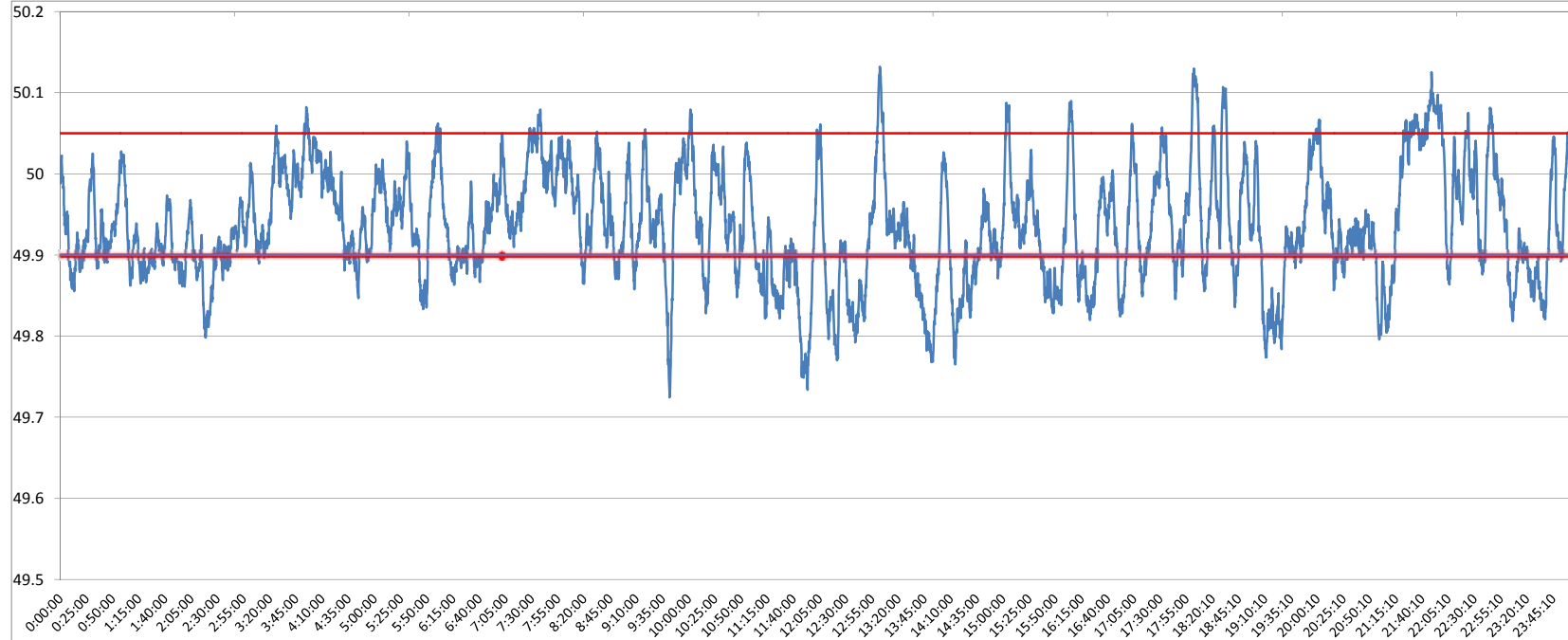


POWER SYSTEM OPERATION CORPORATION LIMITED
NATIONAL LOAD DESPATCH CENTRE NEW DELHI

NTPC-VINDHYACHAL:Frequency

National Grid Frequency Profile for

25-Aug-15



<49.2	<49.7	<49.90	<49.97	49.7-49.8	49.8-49.9	49.9-50.0	50.0-50.1	50.1-50.2	49.90-50.05	49.7-50.2	49.97-50.03	50.05-50.1	>50	>50.03	>50.05	>50.2
0	0.00	31.35	68.90	2.12	29.24	48.34	19.68	0.63	63.06	100.00	20.60	4.98	20.27	10.50	5.59	0.00

Average Frequency		49.94	Frequency Variation Index :		0.090	Standard Deviation :		0.070
Instantaneous Frequency			15 minute average Frequency			No. of excursion above 50.03 Hz		60
Max	50.13	13:02:40	Max	50.080	22:00:00	No. of excursion below 49.97 Hz		80
Min	49.72	9:41:50	Min	49.800	12:00:00	No. of excursion above 50.00 Hz		82
Average time freq remains below 49.97 per excursion		0:12:24	Average time frequency remains above 50.03 per excursion		0:02:31	No. of excursion below 50.00 Hz		82