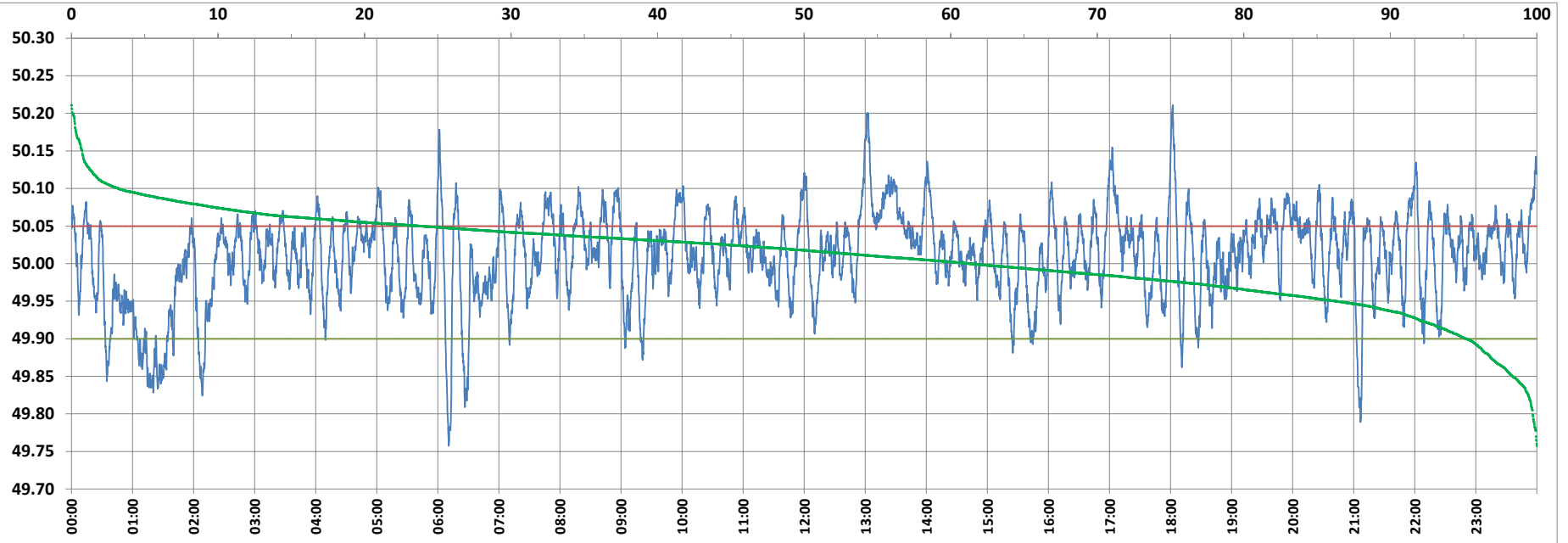


POWER SYSTEM OPERATION CORPORATION LIMITED

NATIONAL LOAD DESPATCH CENTRE, NEW DELHI



Frequency profile for 25-Feb-2022 (Friday)



<49.7	<49.90	<49.97	49.7-49.8	49.8-49.9	49.9-50.0	50.0-50.1	50.1-50.2	49.90-50.05	49.7-50.2	49.97-50.03	50.05-50.1	>50	>50.03	>50.05	>50.2	<49.95	49.95-50.05	49.90-49.95
0.00	4.84	21.85	0.29	4.55	33.88	58.06	3.14	71.31	99.91	37.57	20.63	61.28	40.58	23.85	0.09	13.72	62.43	8.88

Average Frequency : 50.010

Frequency Variation Index : 0.0353

Standard Deviation : 0.0587

Mileage: 45.0

FDI: 28.7

Instantaneous Frequency		
Max	50.211	18:02:10
Min	49.758	6:10:40

15 minute Average Frequency		
Max	50.102	13:15:00
Min	49.853	1:30:00

No. of excursions	
above 50.03 Hz	175
below 49.97 Hz	95
above 50.00 Hz	151
below 50.00 Hz	150

Average time freq per excursion remains	
below 49.97	0:03:19
above 50.03	0:03:20

No. of hours freq outside 49.9-50.05 Hz	
	6:53:10

Source : AGRA 10 Sec. (8640 samples)