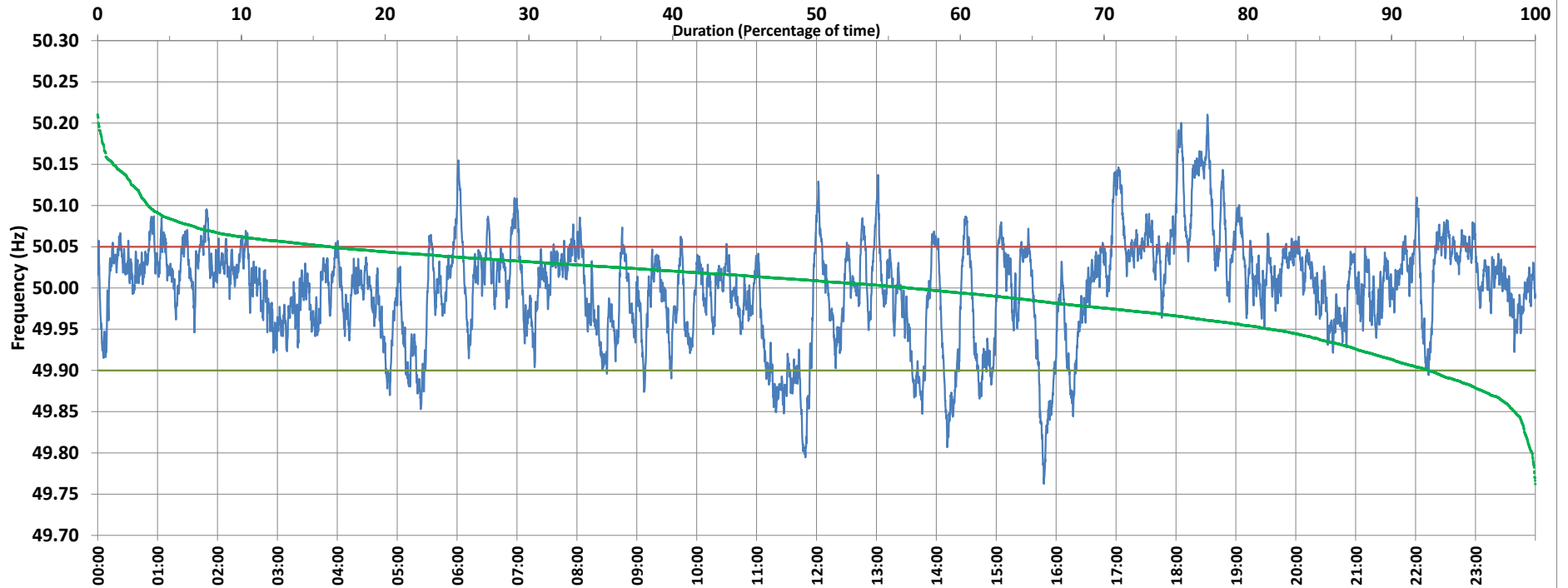


POWER SYSTEM OPERATION CORPORATION LIMITED

NATIONAL LOAD DESPATCH CENTRE, NEW DELHI



Frequency profile for 10-May-2021 (Monday)



<49.7	<49.90	<49.97	49.7-49.8	49.8-49.9	49.9-50.0	50.0-50.1	50.1-50.2	49.90-50.05	49.7-50.2	49.97-50.03	50.05-50.1	>50	>50.03	>50.05	>50.2	<49.95	49.95-50.05	49.90-49.95
0.00	7.42	26.81	0.23	7.19	36.15	52.93	3.45	76.41	99.94	41.60	12.66	56.44	31.60	16.17	0.06	18.43	65.41	11.01

Average Frequency : 50.000

Frequency Variation Index : 0.0375

Standard Deviation : 0.0612

Mileage: 43.0

FDI: 23.6

Instantaneous Frequency		
Max	50.210	18:31:00
Min	49.762	15:47:00

15 minute Average Frequency		
Max	50.144	18:30:00
Min	49.843	16:00:00

No. of excursions	
above 50.03 Hz	164
below 49.97 Hz	118
above 50.00 Hz	151
below 50.00 Hz	151

Average time freq per excursion remains	
below 49.97	0:03:16
above 50.03	0:02:46

No. of hours freq outside 49.9-50.05 Hz	5:39:40
---	---------

Source : BARH 10 Sec. (8640 samples)