

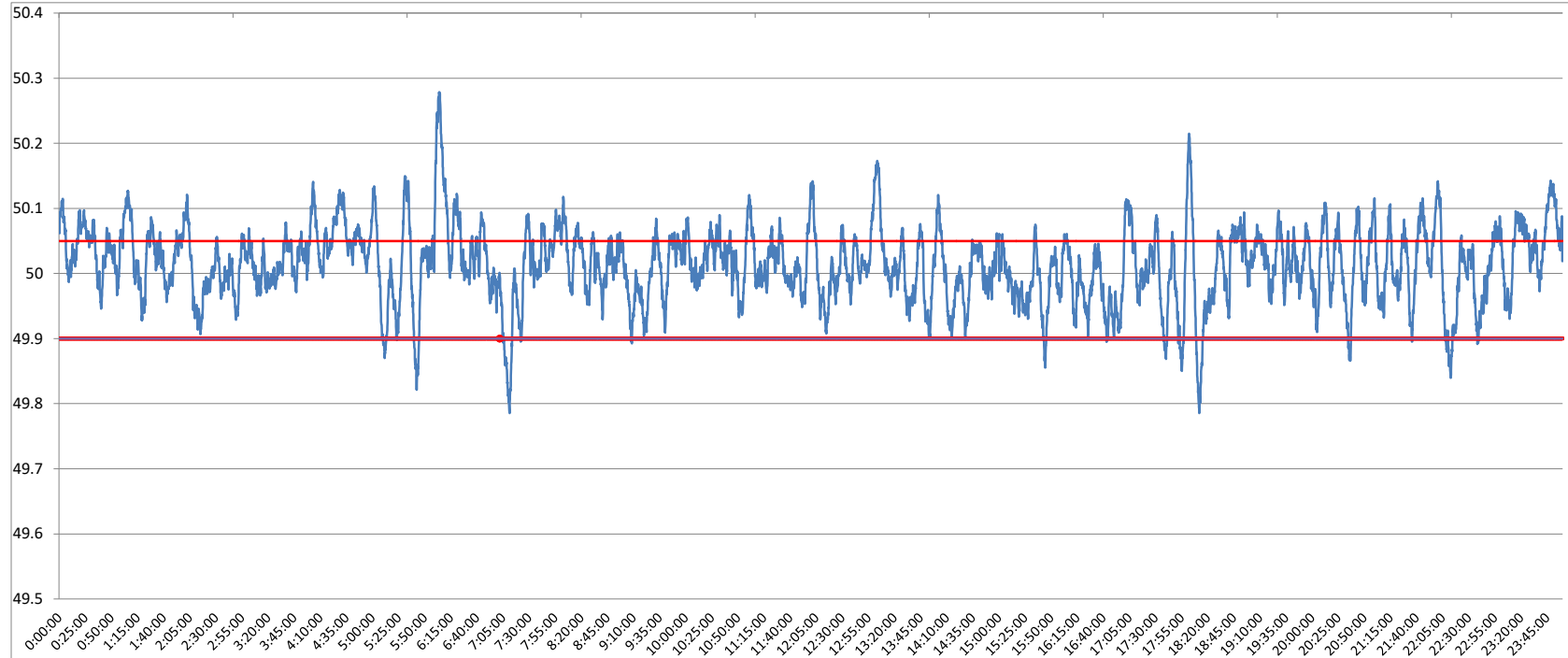


**POWER SYSTEM OPERATION CORPORATION LIMITED**  
NATIONAL LOAD DESPATCH CENTRE NEW DELHI

HISSAR:Frequency

National Grid Frequency Profile for

07-Jan-17



<49.2	<49.7	<49.90	<49.97	49.7-49.8	49.8-49.9	49.9-50.0	50.0-50.1	50.1-50.2	49.90-50.05	49.7-50.2	49.97-50.03	50.05-50.1	>50	>50.03	>50.05	>50.2
0	0.00	3.07	20.35	0.09	2.97	36.42	54.83	5.25	71.79	99.57	40.50	19.55	60.44	39.16	25.14	0.43

<b>Average Frequency</b>		<b>50.01</b>	<b>Frequency Variation Index :</b>		<b>0.036</b>	<b>Standard Deviation :</b>		<b>0.058</b>	
<b>Instantaneous Frequency</b>			<b>15 minute average Frequency</b>			<b>No. of excursion above 50.03 Hz</b>		<b>155</b>	
<b>Max</b>	<b>50.28</b>	<b>6:04:10</b>	<b>Max</b>	<b>50.155</b>	<b>6:15:00</b>	<b>No. of excursion below 49.97 Hz</b>		<b>109</b>	
<b>Min</b>	<b>49.79</b>	<b>18:12:00</b>	<b>Min</b>	<b>49.897</b>	<b>7:15:00</b>	<b>No. of excursion above 50.00 Hz</b>		<b>177</b>	
<b>Average time freq remains below 49.97 per excursion</b>			<b>0:02:41</b>	<b>Average time frequency remains above 50.03 per excursion</b>		<b>0:03:38</b>	<b>No. of excursion below 50.00 Hz</b>		<b>178</b>