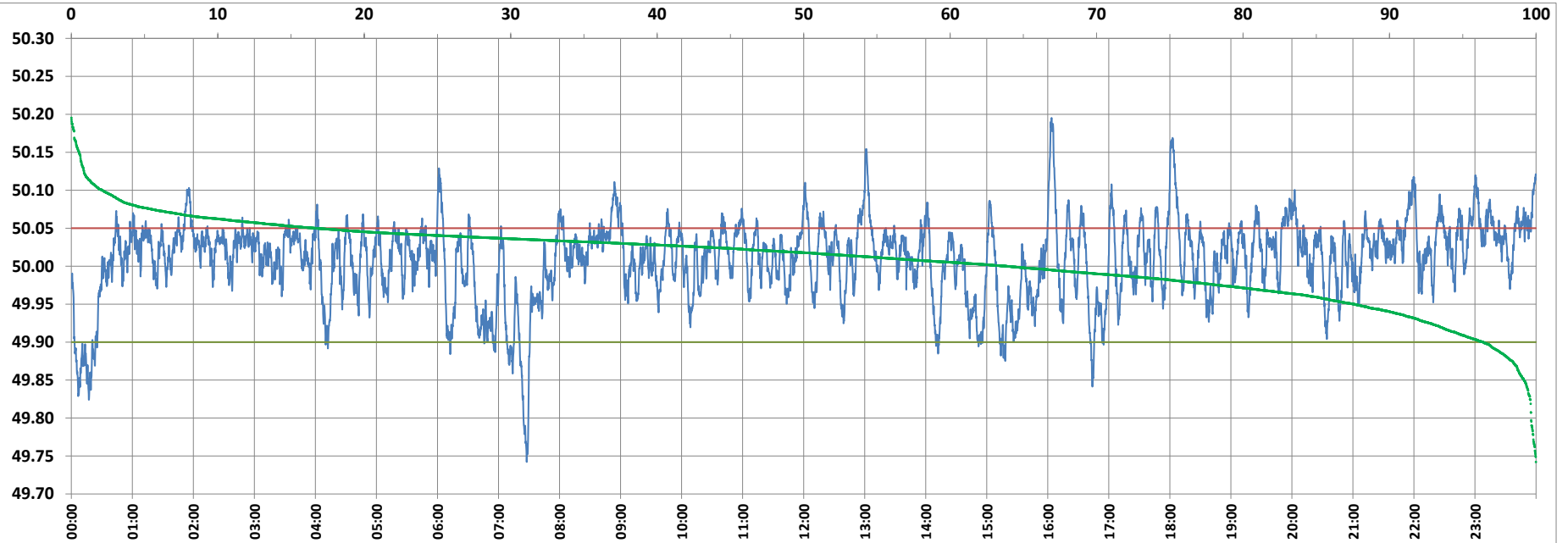


POWER SYSTEM OPERATION CORPORATION LIMITED

NATIONAL LOAD DESPATCH CENTRE, NEW DELHI



Frequency profile for 02-Feb-2022 (Wednesday)



<49.7	<49.90	<49.97	49.7-49.8	49.8-49.9	49.9-50.0	50.0-50.1	50.1-50.2	49.90-50.05	49.7-50.2	49.97-50.03	50.05-50.1	>50	>50.03	>50.05	>50.2	<49.95	49.95-50.05	49.90-49.95
0.00	3.63	19.40	0.34	3.30	32.52	61.71	2.13	79.70	100.00	43.06	14.54	63.84	37.55	16.67	0.00	12.44	70.89	8.81

Average Frequency : 50.008

Frequency Variation Index : 0.0276

Standard Deviation : 0.0520

Mileage: 43.2

FDI: 20.3

Instantaneous Frequency

Max	50.195	16:03:40
Min	49.742	7:27:40

15 minute Average Frequency

Max	50.073	18:15:00
Min	49.861	7:30:00

No. of excursions

above 50.03 Hz	233
below 49.97 Hz	93
above 50.00 Hz	158
below 50.00 Hz	158

Average time freq per excursion remains

below 49.97	0:03:00
above 50.03	0:02:19

No. of hours freq outside 49.9-50.05 Hz

4:52:20

Source : AGRA 10 Sec. (8640 samples)