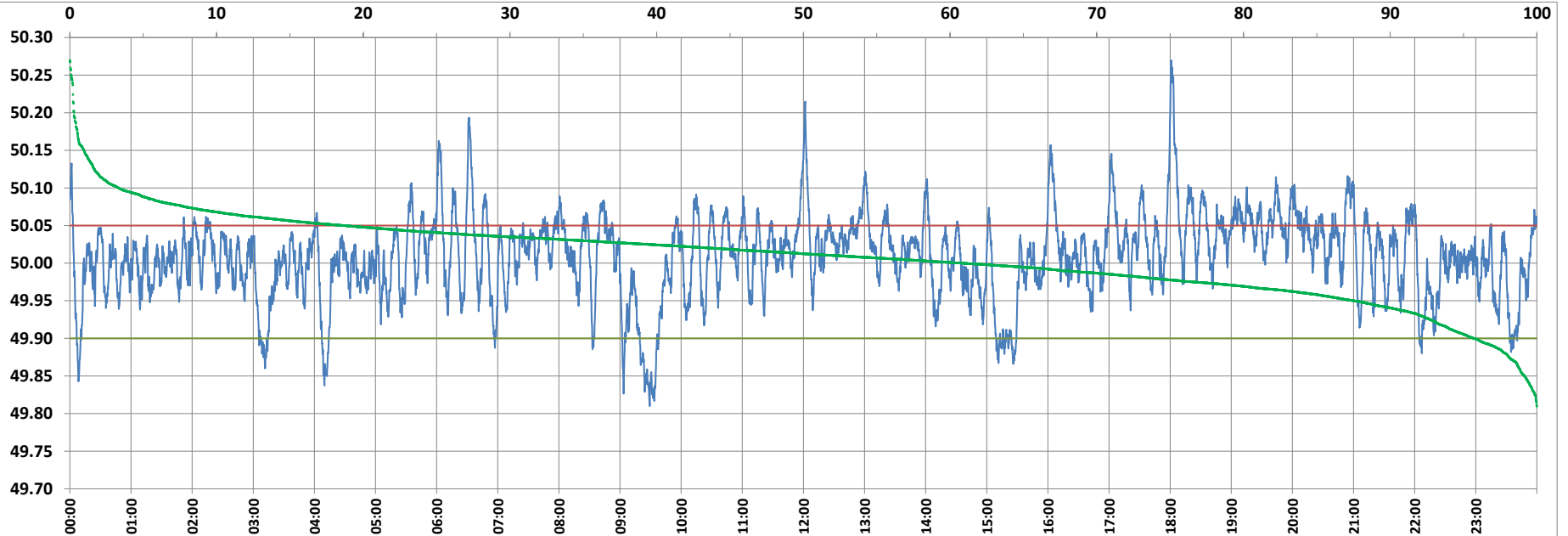


POWER SYSTEM OPERATION CORPORATION LIMITED

NATIONAL LOAD DESPATCH CENTRE, NEW DELHI



Frequency profile for 01-Mar-2022 (Tuesday)



<49.7	<49.90	<49.97	49.7-49.8	49.8-49.9	49.9-50.0	50.0-50.1	50.1-50.2	49.90-50.05	49.7-50.2	49.97-50.03	50.05-50.1	>50	>50.03	>50.05	>50.2	<49.95	49.95-50.05	49.90-49.95
0.00	4.31	20.36	0.00	4.31	34.79	57.57	3.04	76.92	99.71	44.65	15.44	60.90	34.99	18.77	0.29	12.45	68.77	8.15

Average Frequency : 50.008

Frequency Variation Index : 0.0307

Standard Deviation : 0.0549

Mileage: 44.6

FDI: 23.1

Instantaneous Frequency		
Max	50.270	18:01:00
Min	49.810	9:29:00

15 minute Average Frequency		
Max	50.107	18:15:00
Min	49.874	9:30:00

No. of excursions	
above 50.03 Hz	189
below 49.97 Hz	115
above 50.00 Hz	199
below 50.00 Hz	198

Average time freq per excursion remains	
below 49.97	0:02:33
above 50.03	0:02:40

No. of hours freq outside 49.9-50.05 Hz	
	5:32:20

Source : AGRA 10 Sec. (8640 samples)